

Assessment of a Non-Optical Water Quality Property Using Space-based Imagery in Egyptian Coastal Lake

Hala O. Abayazid and Ahmed El-Adawy

Coastal Research Institute
National Water Research Center
Ministry of Water Resources and Irrigation

Hala Osman Moukhtar Abayazid:
e-mail: halazid@yahoo.com
address: 89 Al-Essawy street, Sidi Beshr
Alexandria-Egypt

Abstract—Progressive anthropogenic intrusion and increasing water demand necessitate frequent water quality monitoring for sustainability management. Unlike laborious, time consuming field-based measurements, remote sensing-based water quality retrieval proved promising to overcome difficulties with temporal and spatial coverage. However, remotely estimated water quality parameters are mostly related to visibility characteristic and optically active property of water. This study presents results of an investigated approach to derive oxygen –related water quality parameter, namely Dissolved Oxygen (DO), in a shallow inland water body from satellite imagery. The approach deduces DO levels based on interrelated optical properties that dictate oxygen consumption and release in waters. Comparative analysis of multiple regression algorithms was carried out, using various combinations of parameters; namely, Turbidity, Total Suspended Solids (TSS), Chlorophyll-a, and Temperature. To cover the wide range of conditions that is experienced by Edku coastal lake, ground truth measurements covering the four seasons were used with corresponding satellite imageries. While results show successful statistically significant correlation in certain combinations considered, yet optimal results were concluded with Turbidity and natural logarithm of temperature. The algorithm model was developed with summer and fall data (R^2 0.79), then validated with winter and spring data (R^2 0.67). Retrieved DO concentrations highlighted the variability in pollution degree and zonation nature within that coastal lake, as related to boundary interactions and irregularity in flow dynamics within. The approach presented in this study encourages expanded applications with space-based earth observation products for exploring non-detectable water quality parameters that are interlinked with optically active properties in water.

Keywords-Remote Sensing; Algorithm Model; Coastal lake; Dissolved Oxygen

I. INTRODUCTION

Increasing demands and progressive development process have compromised sustainability potential of the coastal lakes in Egypt. The quality of water resources dictates beneficial uses offered as well as functionality of the aquatic ecosystem, especially with the alarming pollution level associated with the anthropogenic activities. Thus, continuous monitoring and frequent update of water resources status are required for sound management planning and corrective measure scenarios. However, such tasks require comprehensive data collection with adequate temporal and spatial coverage. Remote sensing is an advancing field that has the potential in reducing field work difficulties, and increasingly considered an essential planning tool.

A. Remote Sensing-based Water Quality Retrieval

Several studies in literature have addressed retrieval of water quality parameters using remote sensing techniques. Significant correlations have been found between specific water quality parameters and reflectance measured with satellite sensors. These parameters cause change to the spectral properties of reflected light and, hence, are remotely detectable (Gholizadeh et al., 2016). Recent research by Swain and Sahoo (2017) argued that certain conservative pollutants can be distinctively detected with different reflectance received in the electromagnetic spectrum because no biochemical reactions or ionic exchange are experienced.

Retrieving properties such as water clarity; turbidity, and Total Suspended Solids (TSS) concentrations

using earth observation imageries have been tackled in applied research studies worldwide (Kloiber et al. 2002; Zhang, 2002; Bilge et al., 2003; He et al., 2008; Sravanthi et al., 2013; Dona et al., 2014; Dorji and Fearn 2016; Abayazid and El-Gamal 2017). In 2008, He et al. presented water quality retrieval models with proven successful results for optical nitrogenous and phosphorous components. Other parameters such as chlorophyll-a (chl-a) and Colored Dissolved Organic Matter (CDOM) have also been covered in various studies (i.e. Brezonik et al., 2005; Thiemann and Kaufmann, 2000; Li et al., 2002; Dona et al., 2014).

Remotely deriving weak and/or non-optical water quality characteristics, that have no directly-detectable reflection, is challenging. Consequently, early studies are mostly focused on water physical and biogeochemical components that are considered optically active (Giardino et al., 2014). However, limitation to water quality characteristics that are related to Inherent Optical Property (IOP) narrows down the parameters that can be assessed by remote sensing techniques.

The Dissolved Oxygen (DO) concentration is considered a crucial indicator of water system healthiness, and governs recovery capability (UNESCO, 2005). Yet, being a non-optically active parameter, DO levels cannot be directly retrieved using remote sensing technique. This research study aims to present an approach to detect Dissolved Oxygen concentrations in an inland shallow coastal lake, using space-based imageries.

Based on grounds of early DO modeling theories, as well as regional conditions, the study investigates the potentiality of deducing DO levels from optically detectable water quality parameters that affect, and be affected by, Oxygen presences in water.

B. Study Area

With growing population and development activities, the Nile Delta of Egypt experience challenging conditions. Lake Edku is located within the active Northwestern coastal zone of the Delta, between longitudes 30°8' & 30°23'E and latitudes 31°10' & 31°18'N (Fig. 1). The lake is characterized of having systematically shrinking free open water, altered ecosystem and deteriorating water quality state (Abayazid, 2015). Edku lake serves an active agri-urban basin, and bordered by dense aquaculture

practices. Accordingly, the lake receives wastewaters with different pollution degree from fish farming therapeutic drugs, nutrient flux from agricultural drainage network (e.g. Edku, El-Boussili, Khairy and Bearsik drains), in addition to effluents from municipal WasteWater Treatment Plants (WWTPs) and industrial facilities (Siam and Ghobrial, 2000). The lake is connected to the Mediterranean Sea with single opening "Boghaz Al-Maadia", which allows temporal tidal inflows and localized saline water interaction. Discharges with heavy nutrient levels, as well as the deceased salinity inputs, have encouraged excessive unwanted aquatic vegetation. That, in turn, disturbed natural circulation; flow dynamic and sediment transport, and hence self-purification within the lake (Hossen and Negm, 2017).

II. MATERIALS AND METHODS

This section addresses the basis of DO modeling that dictated selection process to the parameters included in this study application. Also, the ground truth data and corresponding satellite imageries considered are presented, and then followed by the approach adopted for algorithm development.

A. Theory: Grounds for DO Modeling

Modeling of Dissolved Oxygen in water bodies has been initiated in 1925 by Streeter and Phelps through an application in the Ohio River of the United States of America (Chapra, 1997). Simulation studies were based on the fact that the rate at which DO fluctuates in waters reflect the rate of Oxygen demand and release. Their modified model set foundation of DO sinks and sources through inclusion of factors proved affecting the Dissolved Oxygen depletion and recovery in a water body. Beside the initially considered coefficients that represent reaeration as well as settling/decay processes, the model extension added representative components of aquatic flora role in the Oxygen production and exhaustion with photosynthetic activity. Furthermore, sediment consumption of DO has been added as an effective factor to be employed in the modified model for DO prediction. Equations 1 and 2 state the early model and modified version; respectively. More details can be found in the text book of Chapra (1997)

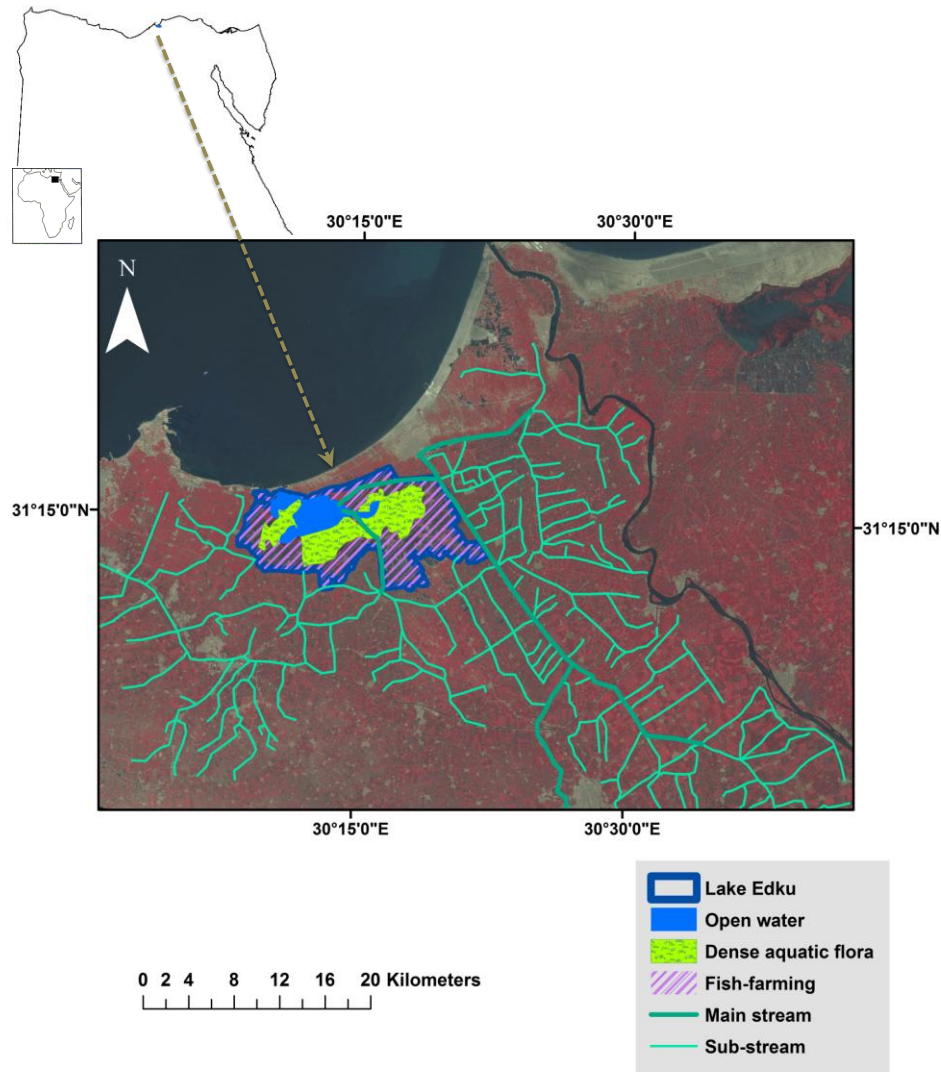


Figure 1. Edku Lake

$$D_t = D_o \text{EXP}(-K_a t) + \left[\frac{K_d L_o}{K_a - K_c} \times \{ \text{EXP}(-K_c t) - \text{EXP}(-K_a t) \} \right] \tag{1}$$

Where; D_t is the predicted dissolved oxygen deficit concentration, t is the travel time, L is the BOD level at point of interest, L_o is the ultimate BOD level, K_a is the reaeration rate, K_d is the decomposition rate, K_s is

the settling removal rate, K_c is the CBOD decay coefficient, and D_o is the initial value of the oxygen deficit.

$$D_t = \frac{K_c L_o (e^{-K_c t} - e^{-K_a t})}{K_a - K_c} + \frac{K_n N_o (e^{-K_n t} - e^{-K_a t})}{K_a - K_n} - \frac{P(1 - e^{-K_a t})}{K_a} + \frac{R(1 - e^{-K_a t})}{K_a} + \frac{S_b(1 - e^{-K_a t})}{K_a} + D_o e^{-K_a t} \tag{2}$$

The modified model has added factors as; P the photosynthetic oxygen production rate, R the algal respiration rate, S_b the sediment oxygen demand rate, N_0 the initial Nitrogenous BOD (NBOD), and K_n the NBOD decay coefficient.

B. Field Measurements

Ground truth data used were obtained from published research study by Okbah et al. (2017). Authors presented data collected in ten sampling locations distributed throughout the Edku Lake. Spatial distribution of field measurement locations reflects variability in the lake water quality, with regard to boundary interaction as well as flow movements within the lake (Fig. 2). Further, sampling campaigns have been carried out during four seasons; spring, summer, fall and winter of year 2016, which reflected the

variable conditions that the coastal lake experience. Statistics of the field measurements show that in summer time DO levels reach the lowest concentrations, ranging from 1.6 to 9.4 mg/L, and experience wide variability within the lake with standard deviation of 3 among the ten investigated locations. Meanwhile, the highest DO levels occur in winter, ranging from 11.3 to 18.1 mg/L, with standard deviation of 2.3. The lake water DO range from 7.5 to 14.0 mg/L in spring, whereas the fall season has slightly less concentrations, ranging from 5.0 to 13.1 mg/L. Maximum measured DO concentrations were mostly found in zones "C" and "D", as illustrated in figure (3). On the other hand, minimum levels occur in locations within the eastern zone "A", where most of direct wastewater discharges reach the lake water, especially in summer season.

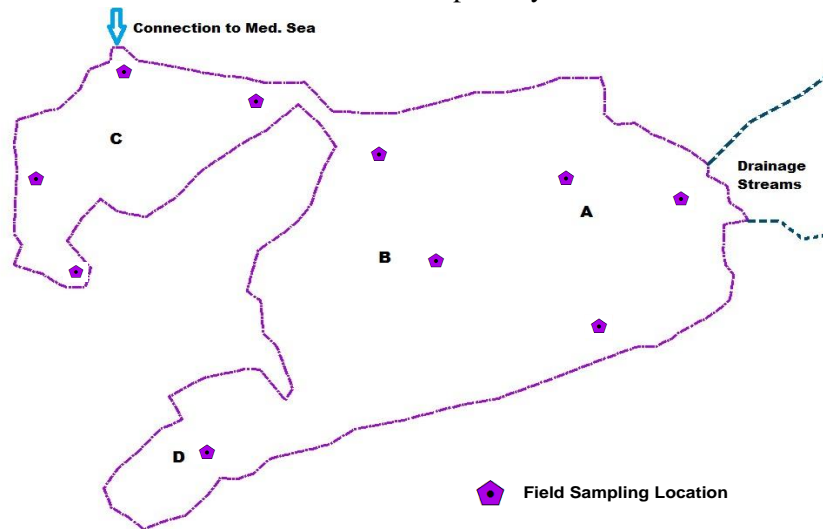


Figure 2. Field measurement locations in Lake Edku zones A, B, C, and D

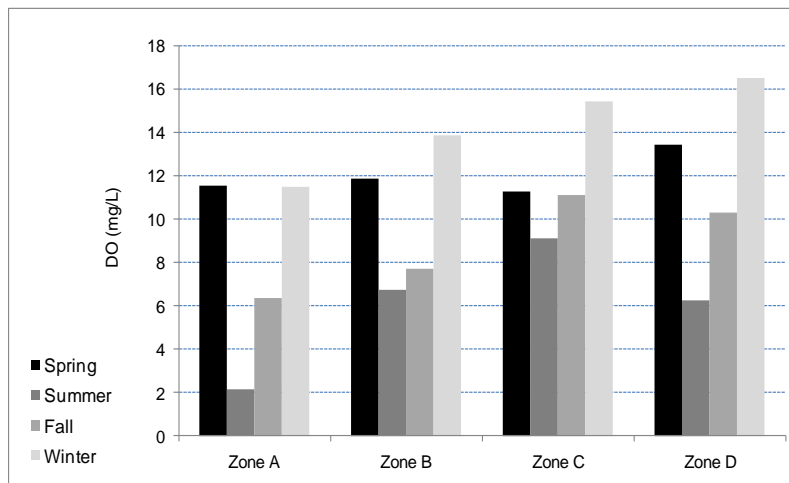


Figure 3. Observed DO data during four seasons in Lake Edku zones

C. Remote Sensing Data

In 2013, Ganoë and DeYoung presented theoretical basis for DO retrieval with the use of air-borne Raman spectroscopy instead of ship-based technology that customary required direct contact with the waterbody. Authors argued the advantages of air-based technique in measuring DO when compared to time consuming as well as limitation in detecting variability in changing water conditions during field trips. The research concluded promising success of remote sensing retrieval of the temporal and spatial dynamics of dissolved gas distributions in coastal ecosystems. Yet aerial arrangements are costly and not always readily available, while space-borne sensors can have more frequent revisits and reasonably spatial coverage with advancing spectral resolution.

The imageries used in this study are the freely available Landsat 8 Operational Land Imager (OLI) from the United States Geological Survey (USGS) Earth- Explorer website. The Landsat 8 (OLI/TIRS) is the most recent satellite that was launched in 2013 under the Landsat program, with swath width of 170 km and 16 days' revisit interval. Since the in situ DO data have been collected during spring, summer, fall and winter of year 2016, images used in this study were acquired on nearest corresponding overpass dates to match the sampling data timing Table (1). Table (2) states the spectral range considered in this study, covering visible and Near-Infrared as well as Thermal Infrared bands. The necessary image processing and result analysis were carried out in Geographic Information System (GIS) environment.

TABLE I. USED LANDSAT 8 (OLI) SCENES AND DATES OF ACQUISITION

Scene ID (path177/row38)	Date Acquired
"LC81770382016071LGN01"	11-Mar-2016
"LC81770382016151LGN01"	30-May-2016
"LC81770382016231LGN01"	18-Aug-2016
"LC81770382016343LGN01"	8-Dec-2016

TABLE II. LANDSAT 8 (OLI) SPECTRAL BANDS CONSIDERED IN THIS STUDY

Landsat 8 (OLI) bands	Spectral range (μm)
Band 2 (Visible)	0.450 - 0.51
Band 3 (Visible)	0.53 - 0.59
Band 4 (Visible)	0.64 - 0.67
Band 5 (Near-Infrared)	0.85 - 0.88
<u>Thermal Infrared Sensor (TIRS)</u>	
Thermal Infrared (Band 10)	10.6 - 11.19
Thermal Infrared (Band 11)	11.5 - 12.51

D. Algorithm Development

Satellite imageries were processed for carrying out multiple regression technique and reaching best algorithm model for DO retrieval in Lake Edku. Analysis have been performed with the spatially distributed field measurements of Dissolved Oxygen as related to the spectral reflectance values derived from Landsat images at corresponding dates in year 2016. The

available field data were divided into two groups for building algorithm models. Then performance has been tested with the reserved second group of data for validation process.

Based on the previously mentioned grounds of Streeter and Phelps DO modeling, as well as regional conditions defining water quality in coastal lakes of Egypt, the trophic and sediment-related properties were

considered key factors in selection. Primary, the parameters included for developing DO derivative algorithms were Turbidity, Total Suspended Sediments (TSS), and Chlorophyll-a. Also, Temperature was added in the DO retrieval process as an important driver affecting Oxygen level in water, especially with the thermal anthropogenic releases and flow dynamic irregularity within Lake Edku. Customarily, DO concentration in water is inversely related to the temperature. Therefore, zonation of thermal property is expected to have direct reflection on DO retrieved

distribution. In process, alternate combinations of the considered parameters have been investigated for optimal model results.

Turbidity and TSS levels were deduced using findings of the recent research study of Abayazid and El-Gamal (2017). Authors concluded regional algorithm models for remotely sensed Turbidity and TSS in the Nile delta coastal zone, in terms of Landsat 8's reflectance from spectral bands; Band2ref, Band4ref and Band5ref, as presented in Equations 3 and 4, respectively.

$$\text{LN TURBIDITY} = -1.2247 + [0.08112 \text{ Band4ref}] + [2.944 \text{ Ln} (\text{Band2ref}/\text{Band4ref})] \quad (3)$$

$$\text{LN TSS} = 0.0496 [3.325 + 13.222 \text{ Band5ref}]3.2214 \quad (4)$$

While literature applications showed various retrieval algorithms for Chlorophyll-a (e.g. Dona et al., 2014; Akbar et al., 2010; Brivio et al., 2001), best agreeable results for quantifying Chlorophyll-a in Lake Edku were found with the ratio between reflectance from spectral bands 2 and 4 of landsat 8 (Eq. 5).

$$\text{Chlorophyll-a} = \text{Band2ref} / \text{Band4ref} \quad (5)$$

Thermal spectral data have been converted to Temperature "T", using the conversion formula presented in Equation 6 (USGS, 2015)

$$T = \frac{K_2}{\text{Ln} \left(\frac{K_1}{L_\lambda} + 1 \right)} \quad (6)$$

Where L_λ is the spectral radiance, and K_1 and K_2 are the thermal conversion constants found in Landsat imagery metadata files. Surface water temperature levels are calculated using averaged values of Thermal Infrared Bands (10) and (11).

Sensitivity analysis was performed to select best combination of the considered parameters, with different seasonal conditions experienced in the lake.

Accordingly, the optimal DO retrieval algorithm model with best fitting predictions, as well as least data requirement and calculation efforts, has been selected for result demonstration.

III. RESULTS

Many factors control the DO concentration within a waterbody; both sources and sinks (e.g. consumption by flora and aerobic organisms, oxidation of carbonaceous and nitrogenous material, decomposition of organic material, photosynthetic activity, degrading inorganic chemicals, re-aeration possibility as well as temperature, and dynamics in flow. Drainage water inflowing into Lake Edku from the interconnected stream networks reflect the expanding urban activities and industrial facilities, beside the intensive agricultural processes. In addition, the aquacultural practices add an extra polluting source.

A. Remotely Sensed Input Parameters

The four parameters initially considered as inputs for DO modeling have been spatially derived for spring, summer, fall and winter seasons of year 2016, with corresponding Landsat imageries. Example illustrations are found in figures 4, 5, 6 and 7 for Temperature, Turbidity, TSS and Chlorophyll-a levels within Lake Edku, respectively.



Figure 4. Spatial distribution of derived Temperature (°C) within Lake Edku in spring, 2016

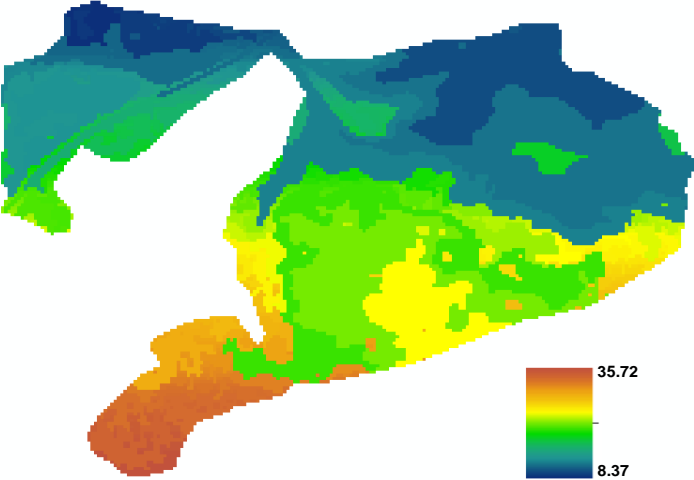


Figure 5. Spatial distribution of derived Turbidity (NTU) within Lake Edku in spring, 2016

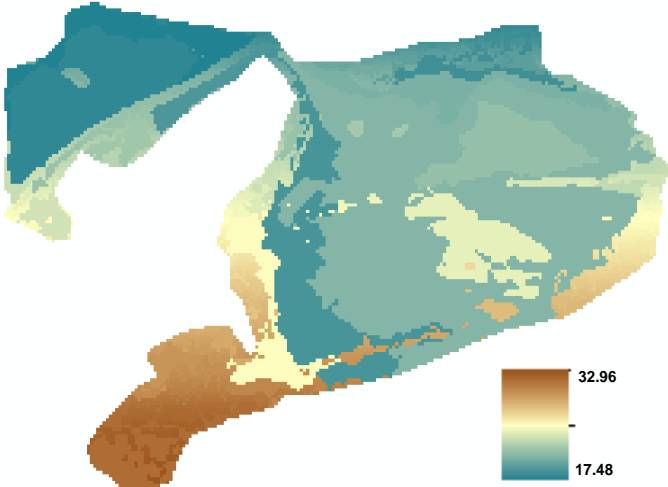


Figure 6. Spatial distribution of derived TSS (mg/L) within Lake Edku in spring, 2016

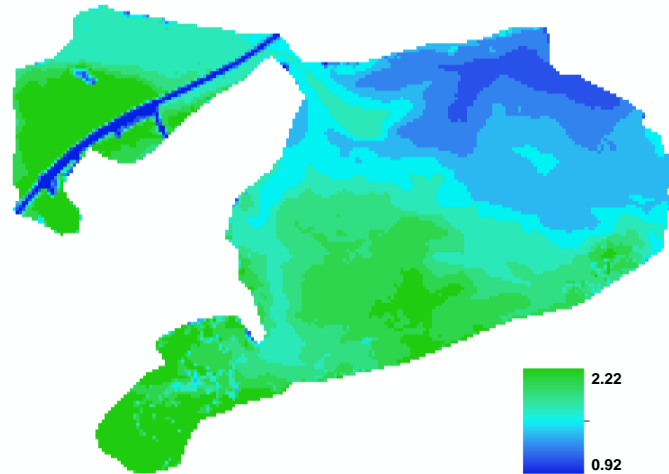


Figure 7. Spatial distribution of derived Chlorophyll-a (mg/m3) within Lake Edku in spring, 2016

B. Sensitivity Analysis

For developing satellite-based Dissolved Oxygen retrieval model, analysis has been carried out with various combinations of input parameters versus DO field measurements. The selected ground truth data is distributed throughout the lake zones. Furthermore, the data covers the four seasons so that a wide range of water quality levels experienced in the lake is considered in the developed model. Table (3) presents model predictive capacity and goodness of fitting while

considering selective inputs as well as seasonal variations of DO presence in the lake waters.

Sensitivity analysis showed that TSS and Turbidity have similar effect in detecting Oxygen consumption in the waterbody under consideration. It was also found that the least influential factor is the Chlorophyll-a. Minor change with least effect in predictive capacity of the developed algorithm occurs when adding Chlorophyll-a to the input parameters.

TABLE III. SENSITIVITY ANALYSIS FOR OPTIMAL DO RETRIEVAL ALGORITHM MODEL

Seasons	Input Parameters	Regression Coefficient (R2)
Spring & Fall & Winter	Turb, TSS, Chl, Ln-temp	0.618
Summer & Fall & Winter	Turb, TSS, Chl, Ln-temp	0.630
Spring & Summer & Fall	Turb, TSS, Chl, Ln-temp	0.657
Summer & Fall	Turb, TSS, Chl, Ln-temp	0.781
Spring & Fall	Turb, TSS, Chl, Ln-temp	0.751
Spring & Winter	Turb, TSS, Chl, Ln-temp	0.651
Spring & Summer & Fall	Turb, TSS, Ln-temp	0.613
Summer & Fall & Winter	Turb, TSS, Ln-temp	0.601
Spring & Fall & Winter	Turb, TSS, Ln-temp	0.584
Spring & Fall	Turb, TSS, Chl	0.644
Spring & Fall	TSS, Chl, Ln-temp	0.676
Spring & Winter	TSS, Chl, Ln-temp	0.554
Summer & Fall	Turb, TSS, Ln-temp	0.766
Summer & Fall	Turb, Chl, Ln-temp	0.798
Summer & Fall	TSS, Ln-temp	0.756
Summer & Fall	Turb, Ln-temp	0.792

C. Developed Algorithm Model for DO Retrieval

Optimal derivative capacity for DO levels in Lake Edku, with least input parameter requirements, hence less processing works and costs, was found by using only Turbidity and natural logarithm of Temperature. The developed algorithm model, stated in Equation 7, proved reasonable fitness with regression coefficient of 0.79 (Fig. 8).

$$DO = 36.27 + 0.19 \text{ Turbidity} - 10.36 \ln(\text{Temperature}) \quad (7)$$

The proposed algorithm was then applied to the second group of data reserved for testing, and satellite-

based derived DO concentrations were compared with the corresponding field measurements. Validation results proved acceptable predictive capacity of the developed algorithm model, with R2 of 0.66 (Fig. 9). Descriptive statistics for observed versus modeled yearly average DO levels within Lake Edku are presented in table (4). The developed model shows highly agreeable predictions with field measurements. However, the model failed to represent the very low DO concentration occurrence in the lake during summer season.

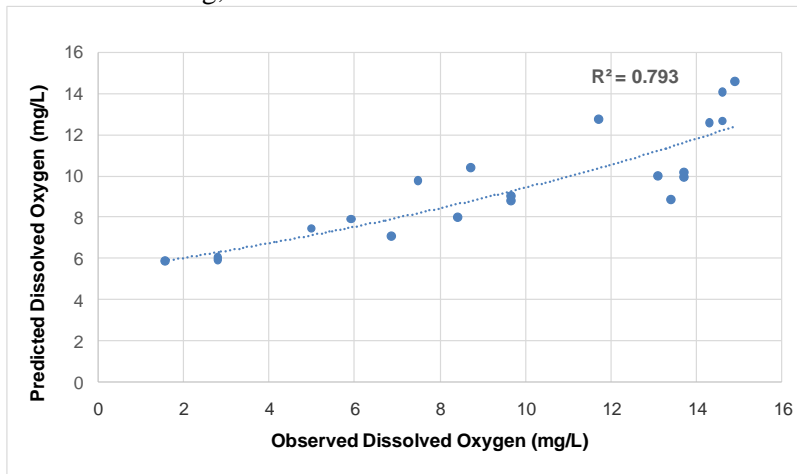


Figure 8. Predictive capacity of developed algorithm model for DO Satellite-based retrieval

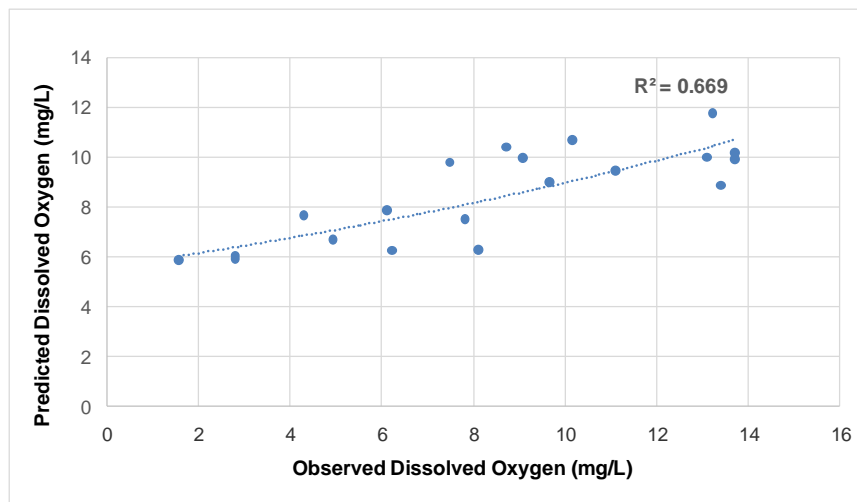


Figure 9. Validation of the developed model for DO retrieval

Once validated, the developed model has been applied to a set of landsat imageris to obtain retrieved DO spatial distribution in Lake Edku in time steps. Figure 10 illustrates comparison for observed versus

derived DO concentrations during four seasons in Lake Edku. For the purpose of demonstration, figure (11) shows an example mapping of DO concentrations throughout the lake zones in winter time.

TABLE IV. DESCRIPTIVE STATISTICS FOR OBSERVED VERSUS DERIVED YEARLY DO LEVELS WITHIN LAKE EDKU

Descriptive Statistics	Do (mg/L)	
	<i>Observed</i>	<i>Modeled</i>
Mean	10.440	9.064
Minimum	1.560	4.552
Maximum	18.107	20.271
Standard Deviation	4.042	3.841

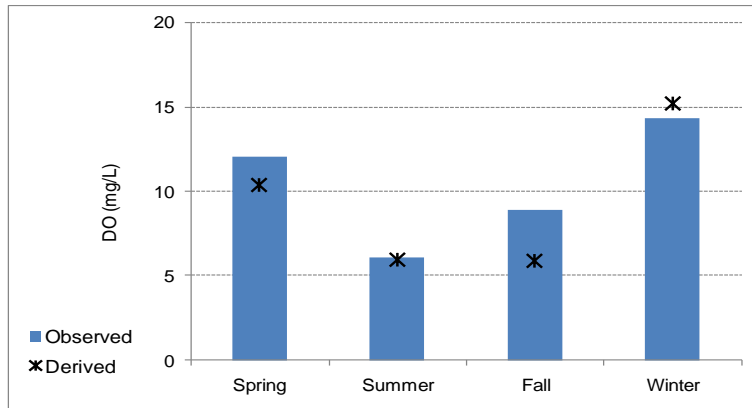


Figure 10. Observed versus derived DO concentrations during four seasons in Lake Edku

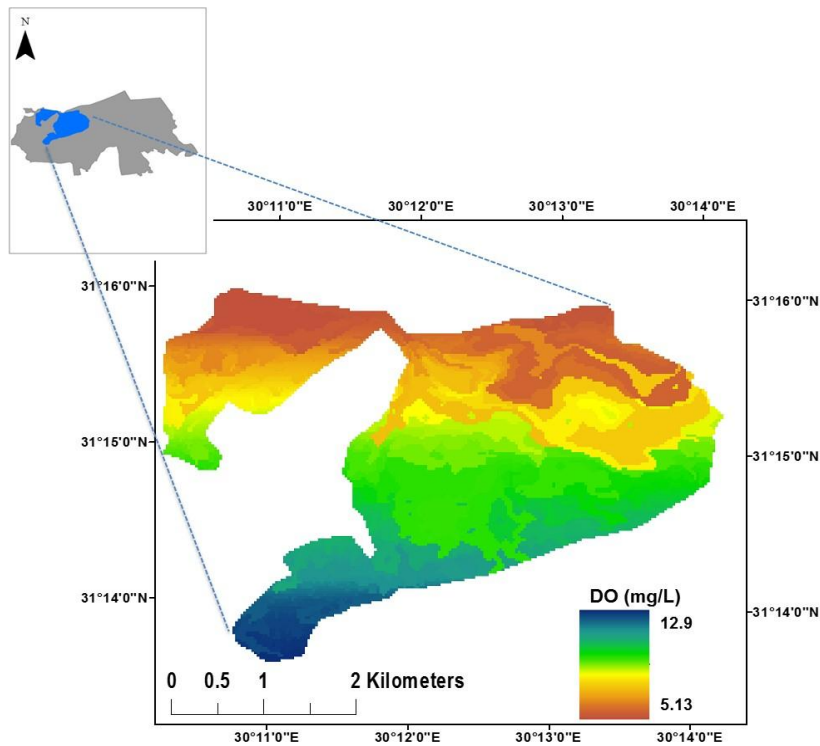


Figure 11. Retrieved DO concentrations in Lake Edku during winter season

IV. DISCUSSION

Main feature characterizes the Edku lake system is the patchy pattern of water quality. Dissolved Oxygen level ranges from less than 2 mg/L, in extremely poor water conditions, to concentrations over 15 mg/L. However, the exceedingly high DO level, with regional temperatures range of 15–30 °C in coastal lakes, is considered 150-250% supersaturation and potentially signifies an unhealthy eutrophication condition (EPA, 1999). In investigating DO concentrations with reference to location within the lake, this case is clearly demonstrated in zone D of Lake Edku.

It has been noted that there are very high DO levels, detected both in field measurements as well as derived DO concentrations, in zone D which comprise entrapped waters with rare interaction. In reviewing this condition, it was found that the area experience intensive unwarranted aquatic flora growth, and accordingly high rate of the photosynthetic oxygen production, that coincides with less active hydrodynamics and water exchange.

On the other hand, Zone A, that is the nearest to major drainage inputs into the lake, has healthier DO concentrations. This zone, while loaded with excessive pollutants, experiences inflowing water velocity along with shallow water depth that allows partial compensation with higher re-aeration rate. Moderate range of DO concentrations exists mostly in zone B, and zone C, with combined effect of low temperature and suspended sediment concentrations as well as slower flow dynamics in zone B and localized tidal effect in zone C.

V. CONCLUSIONS

Developments and consequent concerns about water resources beneficial capacity require continuous monitoring. Field-based assessment of quality state is usually faced by limitations in spatial coverage, frequency of sampling as well as possible economic and accessibility obstacles. Meanwhile, applications with remote sensing techniques have proved successful retrieval of water quality parameters, yet for optically active ones that have directly-detectable spectral signals.

This research study presents an approach for deriving a non-optically active property of water quality, Dissolved Oxygen (DO), with reference to other space-based retrievable parameters that affect and be affected by DO concentrations. Derivation methodology is based on the grounds of DO modeling, as well as regional conditions that define water quality

in coastal lakes of Egypt. The selected ground truth data is distributed throughout the lake zones. Furthermore, the data covers the four seasons so that a wide range of water quality levels experienced in the lake is reflected in the developed model.

The study also presents results of sensitivity analysis for alternate input combinations. Consequently, optimal DO derivative algorithm model, with best predictive capacity and least data requirement, was found. The developed optimal model comprises two satellite-based inputs, namely Turbidity and Temperature, for the Edku coastal lake. With the acceptable predictive capacity achieved, the validated model facilitates regular assessment, with more frequent DO mapping, and possible following of historical changes.

Spatial distribution of DO concentrations reflects the patchy pattern within Lake Edku, with regard to interactions in boundary as well as irregular flow dynamics within. The detected zonation nature calls for specific remedial measures that vary for each section.

Finally, remote sensing techniques proved having the potential to play more roles in monitoring processes, and offering valuable information for sustainability management. The approach illustrated in this study sheds the light at the opportunity to expand applications with space-based earth observation products. The achieved promising results open the field for exploring more non-detectable water quality parameters that are interlinked with optically active properties in water. However further applications with finer imageries and intensive ground truth data are recommended for relationship with higher accuracy.

REFERENCES

- [1] Abayazid, H., 2015. Assessment of temporal and spatial alteration in coastal lakes-Egypt. In: Proceedings of the eighteenth International Water Technology Conference (IWTC 2015), Sharm El Sheikh, 12–14 Mar 2015, 598–608.
- [2] Abayazid, H., El-Gamal, A., 2017. Employing remote sensing for water clarity monitoring in the Nile Delta coast. *International Water Technology Journal IWTJ* 7(4), 265-277.
- [3] Akbar, T., Hassan, Q., Achari, G., 2010. A remote sensing based framework for predicting water quality of different source waters. *International Archives of the Photogrammetry, Remote Sensing and Spatial Information Sciences* 34, Part XXX.
- [4] Bilge, F., Yazici, B., Dogeroglu, T., Ayday, C., 2003. Statistical evaluation of remotely sensed data for water quality monitoring. *International Journal of Remote Sensing* 24(24), 5317–5326.
- [5] Brezonik, P., Menken, K.D., Bauer, M., 2005. Landsat-based remote sensing of lake water quality characteristics, including chlorophyll and colored dissolved organic matter (CDOM). *Lake Reserv. Manag.* 21, 373–382.

- [6] Brivio, P., Giardino, C., Zilioli, E., 2001. Determination of chlorophyll concentration changes in Lake Garda using an image-based reductive transfer code for landsat TM images. *International Journal of Remote Sensing* 22(2), 487-502.
- [7] Chapra, S.C., 1997. *Surface water quality modeling*. McGraw-Hill Co. Inc.
- [8] Dona, C., Sánchez, J.M., Caselles, V., Domínguez, J.A., Camacho, A., 2014. Empirical relationships for monitoring water quality of lakes and reservoirs through multispectral images. *IEEE Journal of Selected Topics in Applied Earth Observations and Remote Sensing* 7(5), 1632-1641.
- [9] Dorji, P., Fearn, P., 2016. A quantitative comparison of Total Suspended Sediment algorithms: A case study of the last decade for MODIS and Landsat-based sensors. *Remote Sens.* 8, 810; doi:10.3390/rs8100810.
- [10] Environmental Protection Agency (EPA), 1999. *Guidance manual for compliance with the interim enhanced surface water treatment rule*. United States, Environmental Protection Agency, Office of Water (4607) publishing, EPA-815-R-99-010, 201p.
- [11] Ganoe, R., DeYoung, R., 2013. Remote sensing of Dissolved Oxygen and Nitrogen in water using raman spectroscopy. the NASA scientific and technical information (STI), NASA Center for Aerospace Information, NASA/TM-2013-218142.
- [12] Gholizadeh, M.H., Melesse, A.M., Reddi, L., 2016. A comprehensive review on water quality parameters estimation using remote sensing techniques. *Sensors* 16 (8), 1298; doi:10.3390/s16081298.
- [13] Giardino, C., Bresciani, M., Stroppiana, D., Oggioni, A., Morabito, G., 2014. Optical remote sensing of lakes: an overview on Lake Maggiore. *J. Limnol.* 73(s1), 201-214; DOI: 10.4081/jlimnol.2014.817.
- [14] He, W., Chen, S., Liu, X., Chen, J., 2008. Water quality monitoring in slightly-polluted inland water body through remote sensing - A case study in Guanting Reservoir, Beijing, China. *Front. Environ. Sci. Engin. China* 2(2), 163-171; DOI 10.1007/s11783-008-0027-7.
- [15] Hossen, H., Negm, A., 2017. Sustainability of water bodies of Edku Lake, Northwest of Nile Delta, Egypt: RS/GIS Approach. *Procedia Engineering* 181, 404 - 411.
- [16] Kloiber, S.M., Brezonik, P.L., Bauer, M.E., 2002. Application of Landsat imagery to regional-scale assessments of lake clarity. *Water Res.* (36), 4330-4340.
- [17] Li, S., Wu, Q., Wang, X., 2002. Correlations between reflectance spectra and contents of Chlorophyll-a in Chaohu Lake. *Journal of Lake Sciences* 9 (14), 228- 234.
- [18] Okbah, M., Abd El-Halim, A., Abu El-Regal, M., Nassar, M., 2017. Water quality assessment of Lake Edku using physicochemical and nutrients salts. *Egypt. Chemistry research journal* 2 (4), 104-117.
- [19] Siam, E., Ghobrial, M., 2000. Pollution influence on bacterial abundance and Chlorophyll-a concentration: case study at Idku Lagoon, Egypt. *Scientia Marina SCI. MAR.* 64 (1), 1-8.
- [20] Sravanthi, N., Ramana, I.V., YunusAli, P., Ashraf, M., Ali, M.M., Narayana, A.C., 2013. An algorithm for estimating Suspended Sediment concentrations in the coastal waters of India using remotely sensed reflectance and its application to coastal environments. *Int. J. Environ. Res.*, 7(4), 841-850.
- [21] Swain, R., Sahoo, B., 2017. Improving river water quality monitoring using satellite data products and a genetic algorithm processing approach. *Sustainability of Water Quality and Ecology* (9-10), 88-114.
- [22] Thiemann, S., Kaufmann, H., 2000. Determination of Chlorophyll content and trophic state of lakes using field spectrometer and IRS-1C satellite data in the Mecklenburg Lake district - Germany. *Remote Sensing of Environment* 73, 227- 235.
- [23] United Nations Educational, Scientific and Cultural Organization (UNESCO), 2005. *water resources systems planning and management* - ISBN 92-3-103998-9 - © UNESCO, 390 - 393.
- [24] United States Geological Survey (USGS), Earth Resources Observation and Science (EROS) Center, 2015. *LANDSAT 8 (L8) data users' handbook, Version 1.0, LSDS-1574*.
- [25] Zhang, Y.Z., 2002. Application of an empirical neural network to surface water quality estimation in the Gulf of Finland using combined optical data and microwave data. *Remote Sensing of Environment* 81(2), 327-336.